

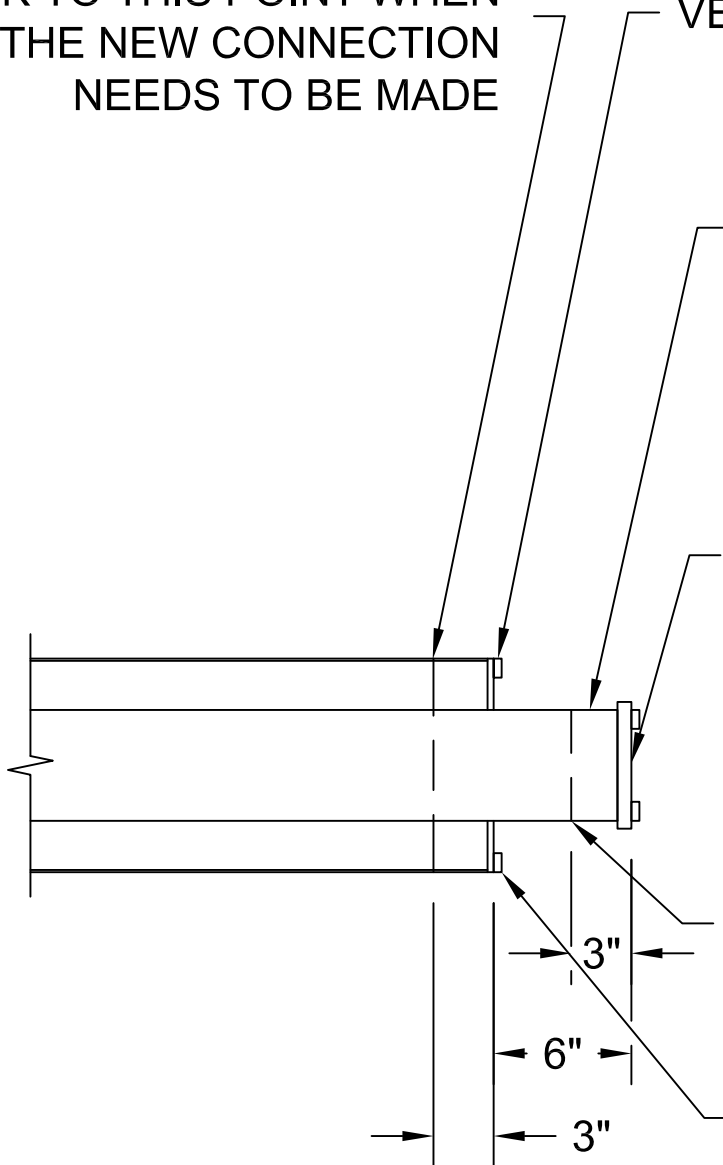
CUT THE CONTAINMENT
BACK TO THIS POINT WHEN
THE NEW CONNECTION
NEEDS TO BE MADE

VENT FOR AIR TESTING

IF NEW CONNECTION WILL NOT
BE MADE WITHIN ONE YEAR,
EXPOSED STEEL CARRIER PIPE
WILL BE FIELD COATED WITH
ROSKOTE MASTIC TO A .250"
THICKNESS

1/2" THICK STEEL PLATE
WITH COUPLINGS &
THREADED PLUGS FOR
VENT/DRAIN & TESTING

CUT THE CARRIER PIPE BACK TO
THIS POINT AND PREP THE END,
WHEN THE NEW CONNECTION
NEEDS TO BE MADE



DRAIN

CONTAINMENT CAP FOR FUTURE DETAIL

N.T.S.

Rovanco®

20535 S.E. FRONTAGE RD. JOLIET, IL. 60431 (815) 741-6700

NAME: CONTAINMENT CAP FOR FUTURE DETAIL

APPR BY:
DK

DRAWN BY:
AD

DATE/REV:
10/14/2009

DWG NO:
CT-SxS-M-01